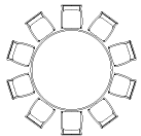
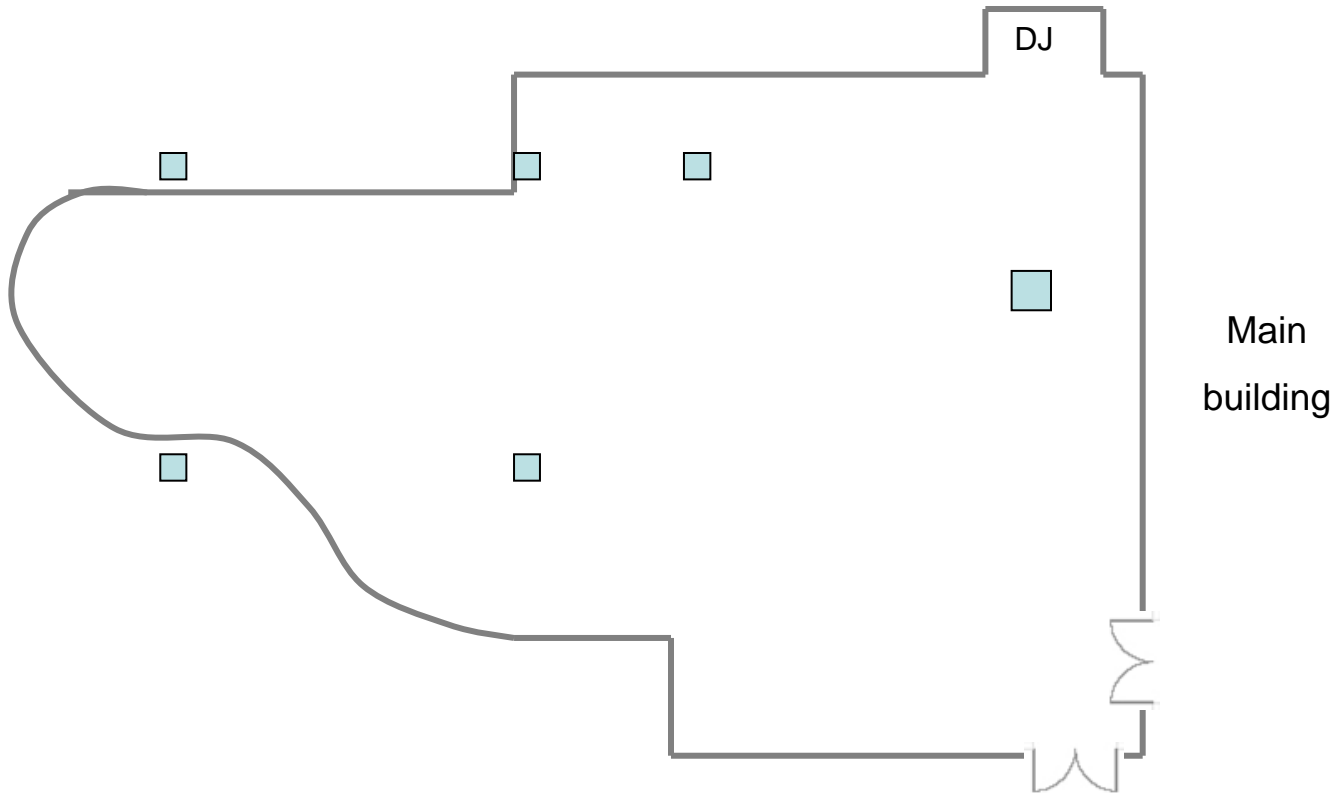


Basement floor plan

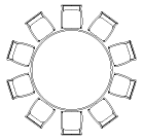


60" table with
10 chairs

□ Support post



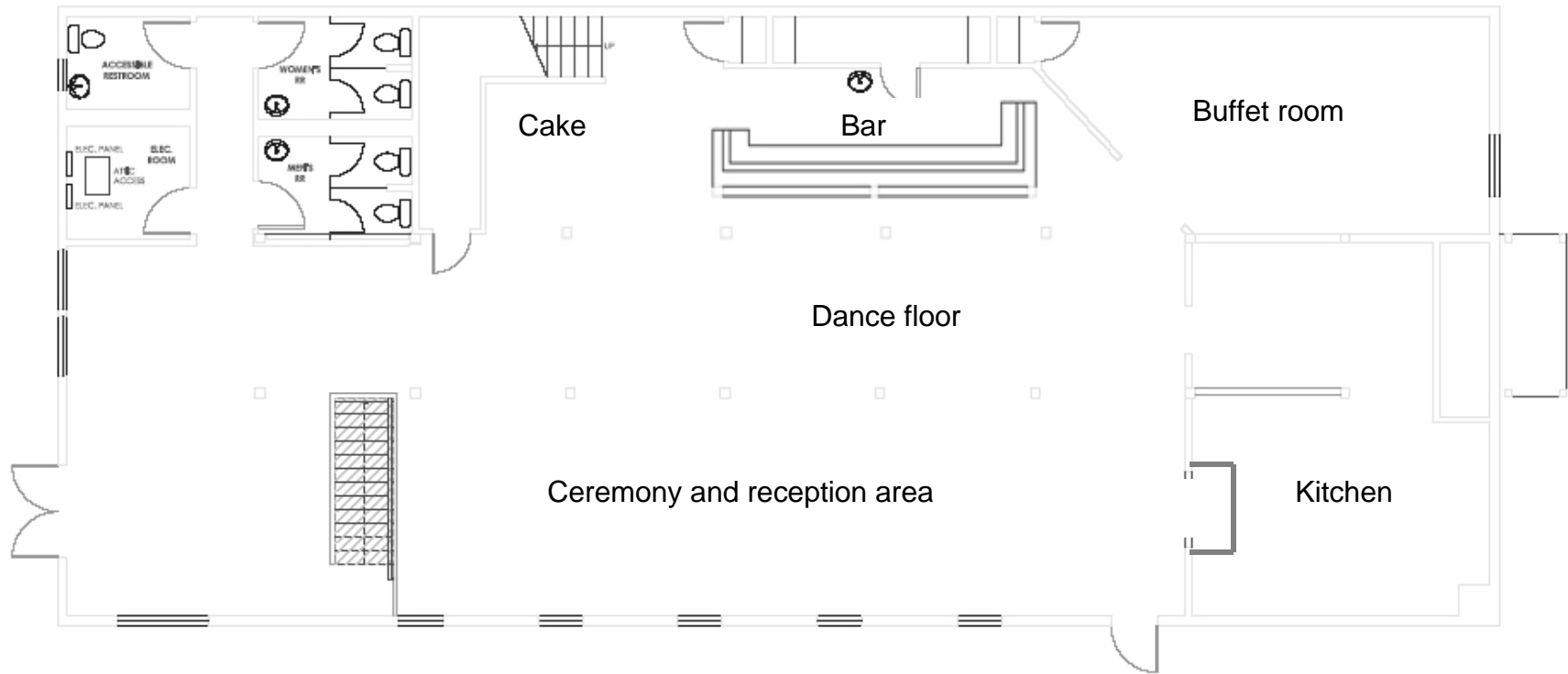
West wing Wisteria Courtyard floor plan



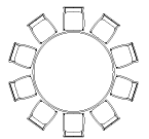
60" table with
10 chairs



Support post

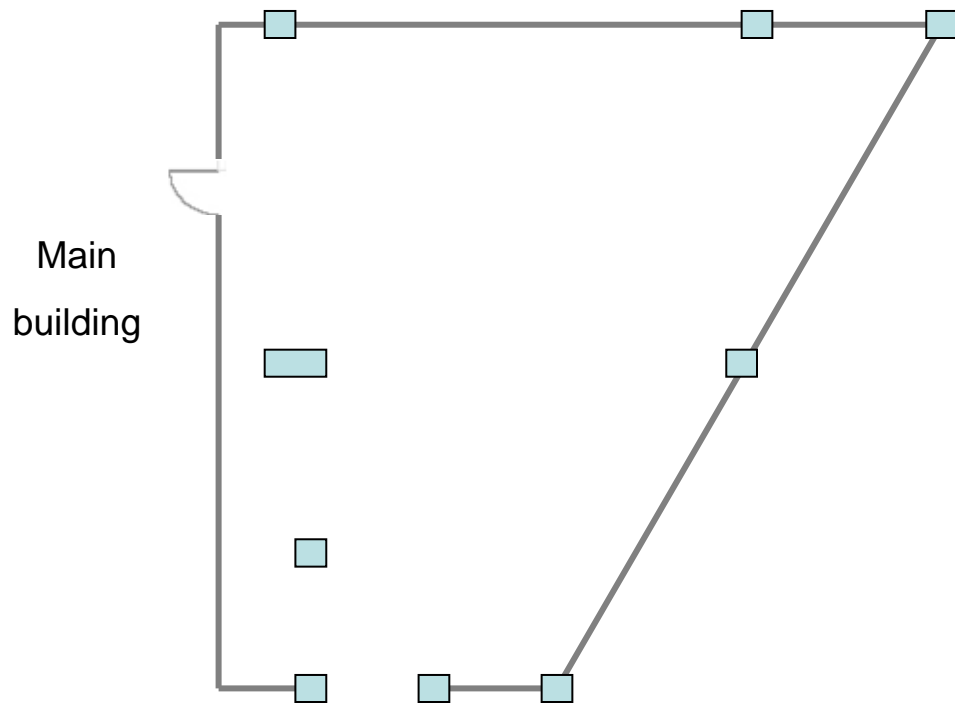


Main floor plan

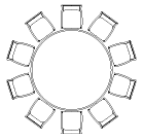


60" table with
10 chairs

□ Support post



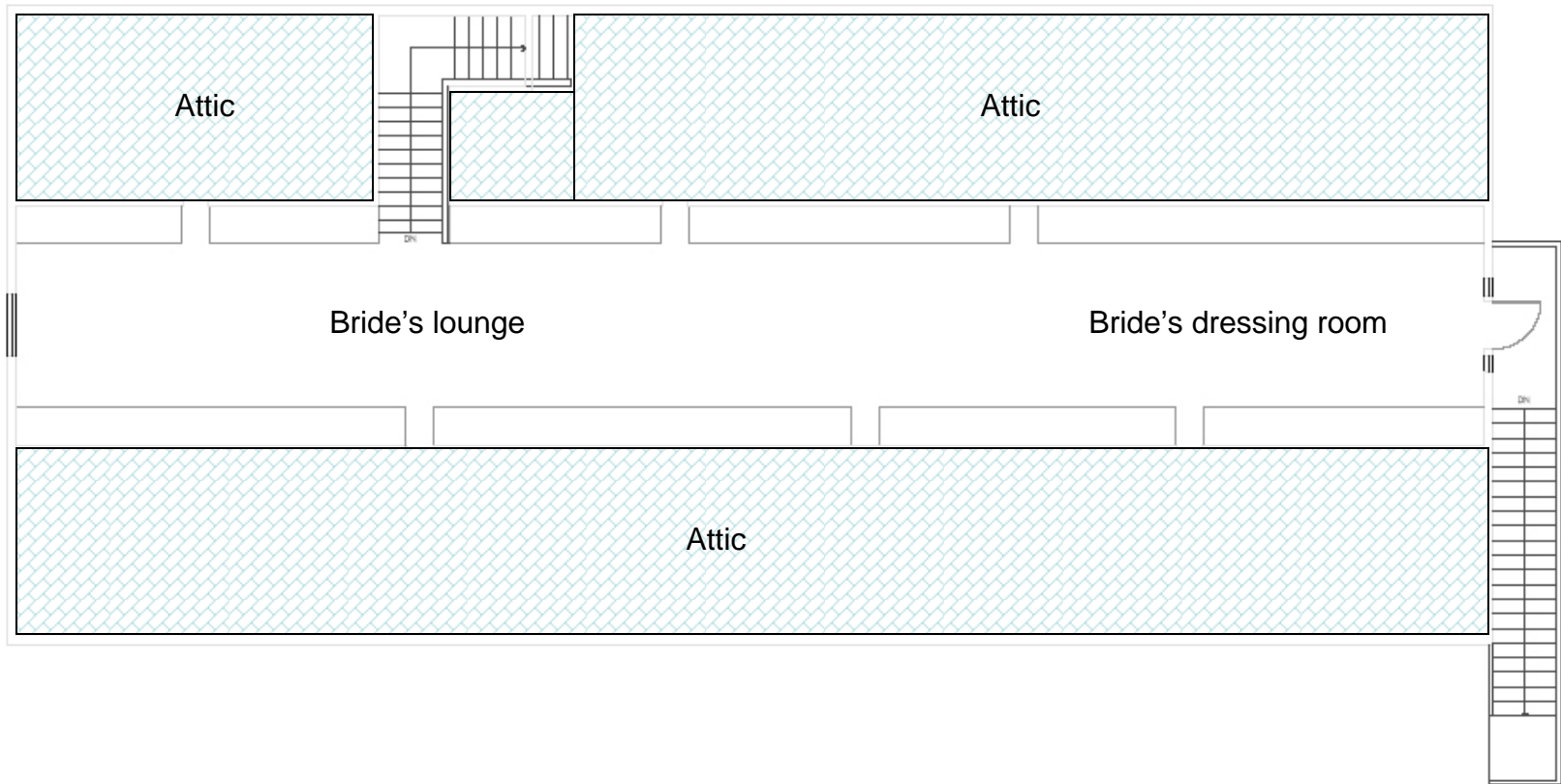
East wing Rustic Lodge floor plan



60" table with 10 chairs



Support post



Upstairs bride's room and lounge floor plan